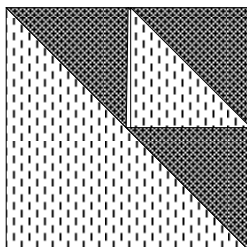


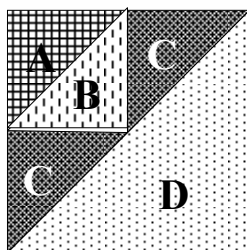
## SHADED 4-PATCH



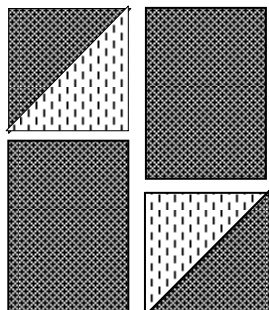
This “unit” is found in many blocks. The “traditional” method of construction involves sewing together 5 triangles, 4 small + 1 large.

The method illustrated here uses rectangles, which are cut after stitching. This reduces the chance of distortion.

Choose the colors/values you want for the sub-units. All the sub-units (A, B, C, D) can be different colors. These instructions are written for A, B, C, D. If you are doing light/dark or dark/light, adjust your cutting accordingly.

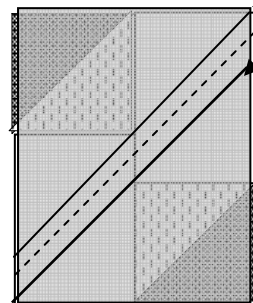
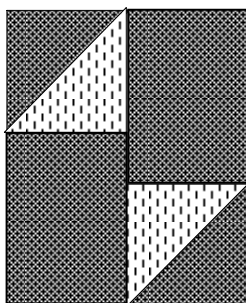


Multi-color



With triangles facing as illustrated below, sew each A/B HST (or solid square) to end of a C rectangle [C cut 1” longer than it is wide and as wide as the A/B is including seam allowances]. Sew them together as illustrated below. Find center of this seam and clip the seam allowances to the stitching. Press all seam allowances towards the C rectangles, away from A/B.

Lay D rectangle [cut the same size as the A/B/C rectangle unit] right sides together with A/B/C unit. Mark as indicated below, sew on marked lines and then cut between stitching lines. Press seams toward D triangle.



Draw a 45° line from each outside corner, to A/B corner, to opposite outside edge as illustrated.

Copyright 2008 by Charlotte Wolfe.  
Charlotte’s Sew Natural, 710 N. Main St., Newton, KS 67114

[www.sewnatural.net](http://www.sewnatural.net)